

Module 6 : Influence Lines

Lecture 6 : Tutorial Problems

Objectives

In this course you will learn the following

- Some tutorial problems related to this module.

TUTORIAL PROBLEMS

T6.1 Draw the Influence Line Diagram (ILD) for R_E . Consider B & B' and C & C' to be at an infinitesimal distance to each other.

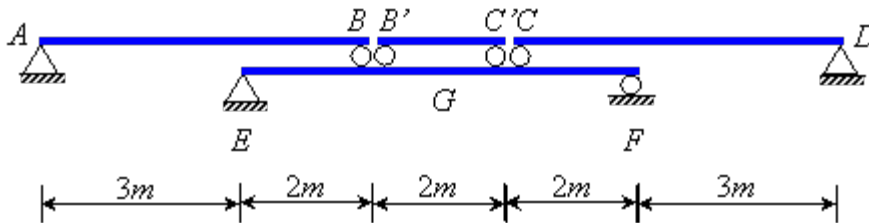


Figure T6.1

T6.2 Draw the Influence Line Diagram (ILD) for M_G for the following Figure T6.2.

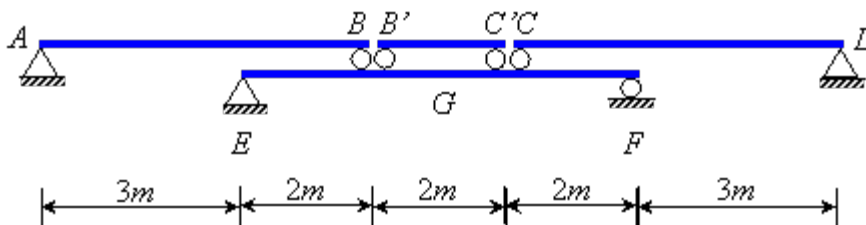


Figure T6.2

T6.3 Find the maximum shear force at C for the moving load combination in Figure T6.3.

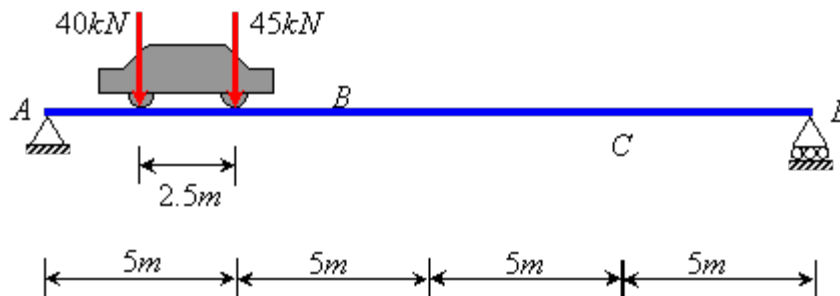


Figure T6.3

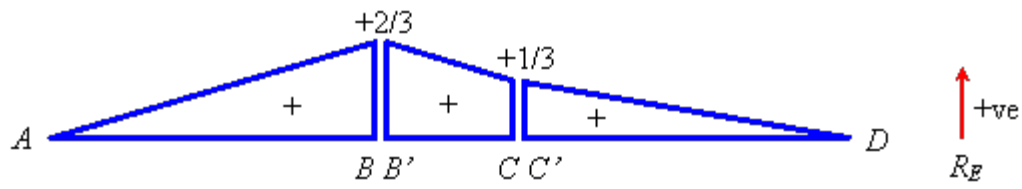
Recap

In this course you have learnt the following

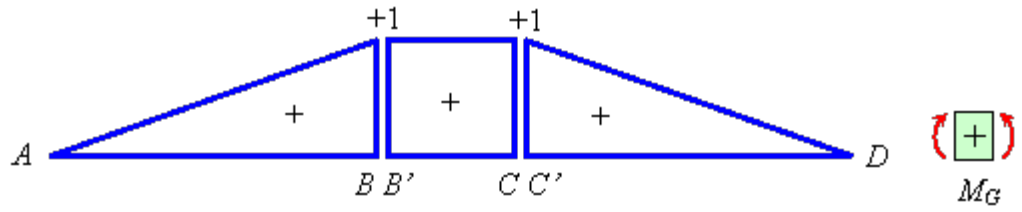
- You have learned some tutorial problems related to this module.

Answers of tutorial problems

T6.1



T6.2



T6.3 58.75 kN