

Proteomics Course

LECTURE-15

Two-dimensional electrophoresis: Image processing and data analysis



Dr. Sanjeeva Srivastava
IIT Bombay



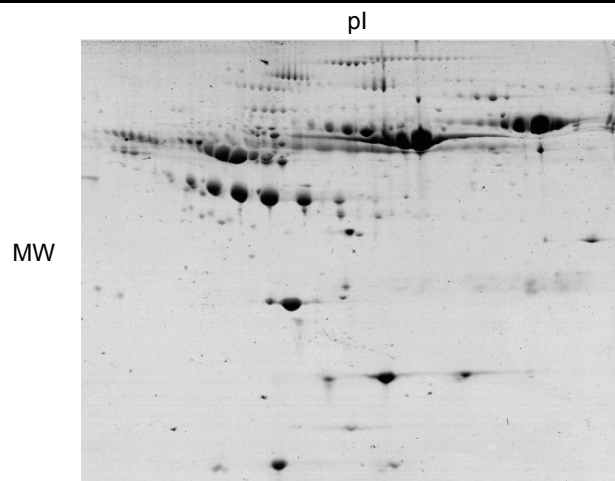
Previous lecture

- Gel-based proteomics
- 2-DE work-flow

Today's lecture

- Two Dimensional Electrophoresis
- Image processing and data analysis
- Discussion

A good 2-D gel



Challenges associated with 2-D gels

**Image Processing and Data Analysis:
*Discussion and demonstration***

Summary

- Challenges associated with 2-DE
- Image processing and data analysis

SUGGESTED LINKS

- www.gelifesciences.com [ImageMaster]
- <http://www.genebio.com/products/melanie/>

Acknowledgment

Dr. Srinivas, GE healthcare for software
demonstration of 2D analysis